

Economic Impact Study for Public Ports

Bryan J. Ross

MoPorts@modot.mo.gov

1-888-MO-PORTS

May 22, 2018

Why did we have this report done?



What is the success of our requests?

FY 2014 - \$3 million

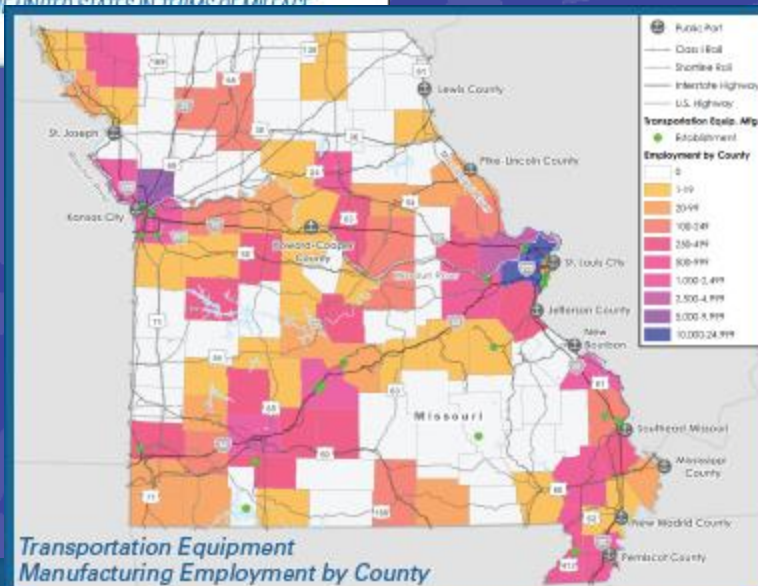
FY 2015 - \$3 million

FY 2016 - \$3 million

FY 2017 - \$4 million

FY 2018 - \$1.5 million

What are we doing with the report?



IN 2016 MISSOURI PUBLIC PORTS MOVED

4M TONS OF FREIGHT
EQUIVALENT TO NEARLY
100K TRUCKS
AN INCREASE OF
78%
SINCE 2011

MISSOURI PUBLIC PORTS SUPPORT NEARLY

290K JOBS ANNUALLY

\$15.7B IN LABOR INCOME

& **\$100.6B** IN ECONOMIC ACTIVITY

34% OF MISSOURI'S ECONOMY IS SUPPORTED BY PORTS

GIVING RISE TO MORE THAN **\$2.4B** IN STATE & LOCAL TAX REVENUE

- CHEMICAL MANUFACTURING
- FABRICATED METAL PRODUCT MANUFACTURING
- CROP PRODUCTION & MINING
- NON-METALLIC MINERAL PRODUCT MANUFACTURING
- TRANSPORTATION EQUIPMENT MANUFACTURING
- PRIMARY METAL MANUFACTURING

110,000 jobs for Missouri residents, giving rise to **\$4.7 billion** in annual income.

Port-benefitted industries support **97,500 jobs** and **\$5 billion** in annual income.

What are we doing with the report?

Testimony at this year's budget hearings

News Media

Social Media

Presentations

What are our ports doing with the report?

CITY OF ST. LOUIS PORT DISTRICT

Major Multimodal Port on the Upper Mississippi River

LOCATION

St. Louis, MO in St. Louis County

Upper Mississippi River Miles 171.9 to 191.2

Easy access to Illinois River (to Chicago) and Missouri River

TYPICAL COMMODITIES

- Agricultural products (e.g., corn, soybeans, feed, sugar, wheat)
- Petroleum products
- Coal and lignite
- Aggregates (e.g., cement, concrete, sand, gravel)
- Municipal River Terminal (MRT) specializes in handling salt, metals, aggregates, agricultural products, coal, wood, and other bulk commodities

SERVICES

- Barge loading/unloading, towing, docking, mooring, and fleetings
- Barge leasing (1,000 barges)
- Warehousing
- Dry and liquid storage
- Bulk commodity transloading



CONNECTIVITY

Roads: Direct access to I-70, I-64, I-55, and I-44.

Rail: Access to six Class I railroads and several short lines via rail spur and local switching line (RRRA).

Air: Close to Lambert-St. Louis and Mid-America International Airports and Scott AFB.

Pipeline: Close to major transcontinental pipelines.

FACILITIES

Covers 19.3 miles of riverbank along 6,000 acres of commercial/industrial development. Over 40 tenants along the riverfront.

Municipal River Terminal (MRT) is a 40-acre public, general cargo dock, 2,000-foot dock recently rebuilt. Warehouse, tank storage, outdoor storage, and rail spur on-site.

AVAILABLE LAND

Industrial development sites available in the City's 3,000-acre North Riverfront Commerce Corridor.

CONTACT US

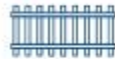
Susan Taylor, Port Development
Nick Nichols, Operations
1620 Market Street, Suite 2000
St. Louis, MO 63103
(314) 657-3740 | taylor@stlouis-mo.gov
(314) 657-3744 | nichols@stlouis-mo.gov
www.stlouisportsauthority.org/



ECONOMIC INDICATORS & STATISTICS

TOTAL STATE & PRIVATE INVESTMENT AT MUNICIPAL RIVERTERMINAL (FY14-FY17)

\$3.1 Million



RAIL GATE IMPROVEMENTS



UPGRADE RAIL YARD

FUTURE INVESTMENT NEEDS AT MUNICIPAL RIVER TERMINAL



\$550K
UPGRADE NORTH RAIL YARD

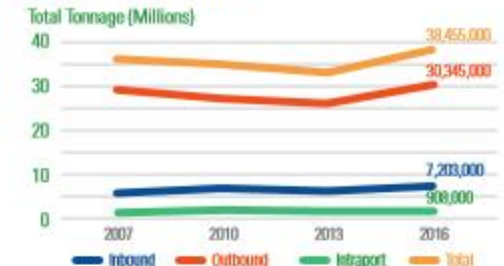


\$7.1M
RAIL UPGRADE –
GATE REPLACEMENT

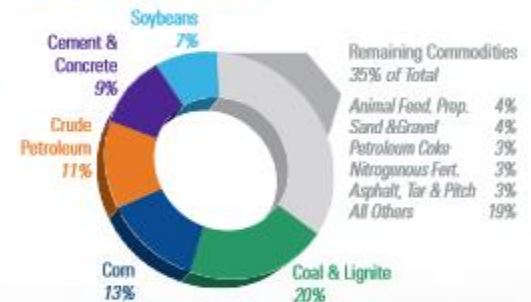


\$7.1M
RAIL UPGRADE –
TRACK REPLACEMENT

TOTAL TONNAGE AT PORT OF METROPOLITAN ST. LOUIS PORT DISTRICT



TOP COMMODITIES AT PORT OF METROPOLITAN ST. LOUIS PORT DISTRICT



ECONOMIC IMPACT OF ST. LOUIS PORT



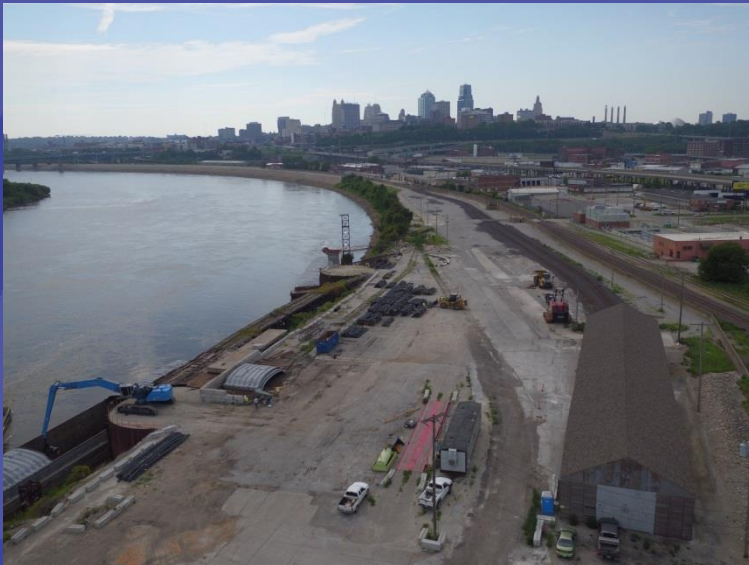
Includes direct, indirect, and induced economic impacts of St. Louis Port operations and capital investment.

Produced by



1-888-MO-PORTS
MoPorts@modot.mo.gov
[facebook.com/MoDOTStatewide](https://www.facebook.com/MoDOTStatewide)
twitter.com/modot

Aerial Photography



Takeaways and Results

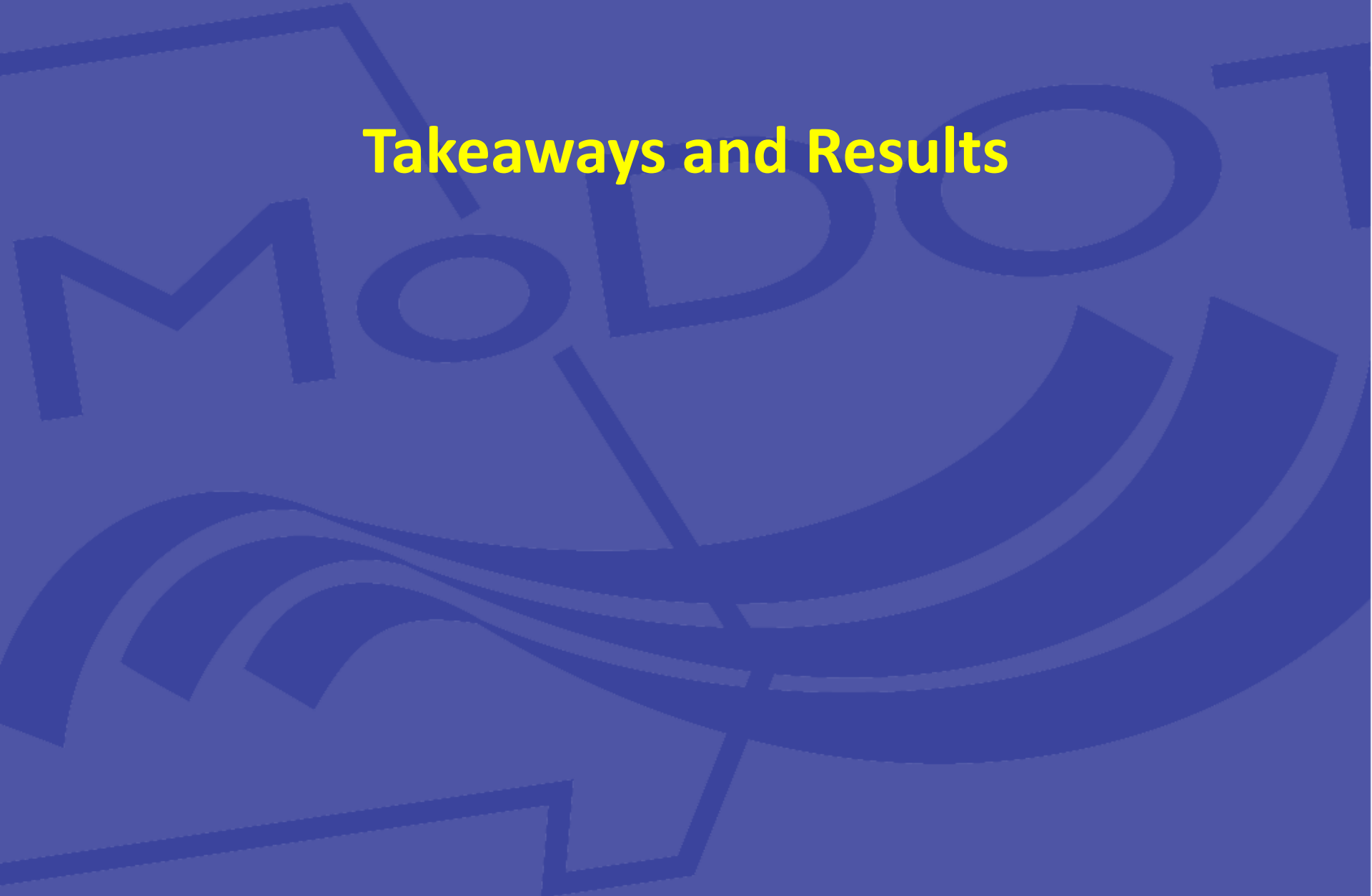


Table 3.5 Summary of Direct Impacts of Port-Dependent Industries

NAICS	Industry Description	Employment (2016)	Labor Income (2016)	Location Quotient (2016)	Real Economic Output (2015)
325	Chemical manufacturing	19,130	\$1.05 billion	1.22	\$7.8 billion
332	Fabricated metal product manufacturing	24,390	\$1.05 billion	1.05	\$2.5 billion
111	Crop production	2,600	\$79.2 million	0.44	\$3.0 billion
212	Mining (except oil and gas)	2,770	\$114.2 million	1.05	\$930 million
327	Nonmetallic mineral product manufacturing	7,300	\$292.2 million	0.96	\$776 million
336	Transportation equipment manufacturing	46,190	\$2.9 billion	1.46	\$4.9 billion
331	Primary metal manufacturing	7,030	\$296.2 million	0.94	\$730 million
	Total	109,410	\$5.8 billion		\$20.6 billion

Table 4.3 Employment and Income at Port-Dependent Businesses in Missouri
By Industry, 2016

NAICS Code	Industry	Total Employment	% of Total	Avg. Weekly Wage	Avg. Annual Income Impact
212	Mining (except Oil and Gas)	2,770	3%	\$793	\$114,223,720
325	Chemical Manufacturing	19,130	18%	\$1,060	\$1,054,445,600
327	Nonmetallic Mineral Product Manufacturing	7,300	7%	\$779	\$295,708,400
331	Primary Metal Manufacturing	7,030	7%	\$832	\$304,145,920
332	Fabricated Metal Product Manufacturing	24,390	23%	\$814	\$1,032,379,920
336	Transportation Equipment Manufacturing	46,190	43%	\$793	\$1,904,690,840
	Total	106,810	100%	\$845	\$4,694,157,087

SFY 2019 Funding

